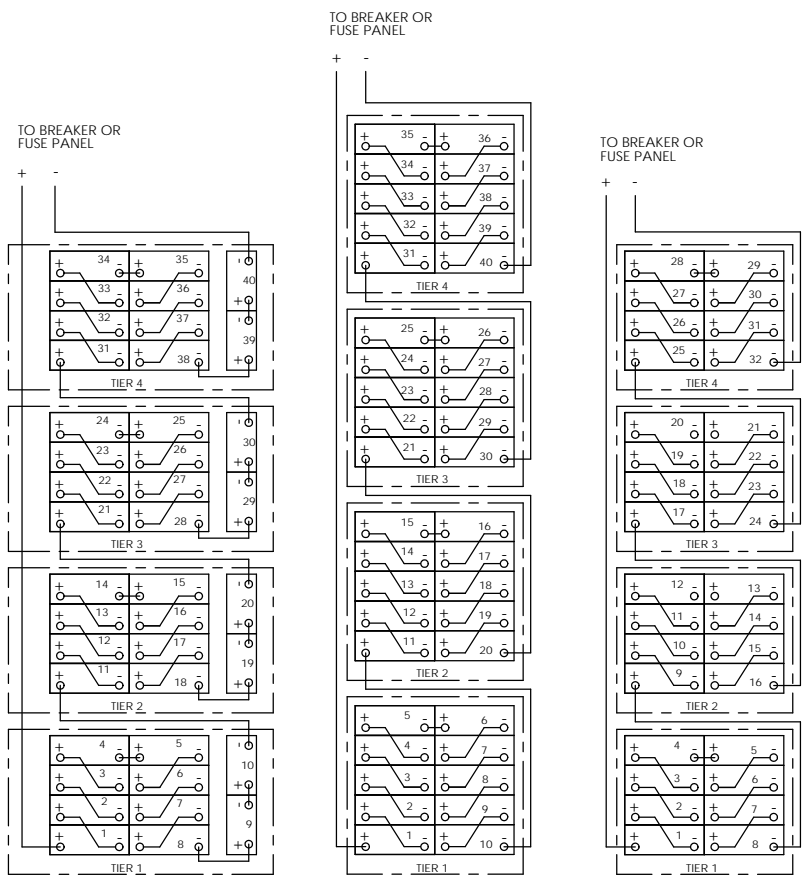


**CABINET NOTES:**

1. NEMA 1 DESIGN.
  2. EMPTY CABINET WEIGHT: 510 LBS (231.8 KG)
  3. UL 1778 LISTED AND FULLY TESTED AT THE FACTORY PRIOR TO SHIPPING.
  4. FULLY WELDED FRAME. MANUFACTURED FROM HEAVY GAUGE STEEL.
  5. POWDER COATED WITH A CORROSION RESISTANT, EPOXY HYBRID POWDER USING A FIVE STAGE EMERSION PRETREATMENT PROCESS.
  6. BATTERIES CAN BE ACCESSED FROM FRONT, REAR, AND BOTH SIDES.
  7. CUSTOM DESIGNED PALLETS FOR SHIPPING ANYWHERE LOCALLY AND GLOBALLY (UPON REQUESTED).
  8. BATTERY CABINET CAN BE MOVED WITH A NORMAL PALLET JACK FROM FRONT AND REAR.
  9. BATTERIES ARE SECURED WITH NON-CONDUCTIVE STRAPPING FOR FOR SAFE TRANSIT.
  10. STANDARD AND CUSTOM SPILL CONTAINMENT OPTIONS ARE AVAILABLE.
- SEE HEIGHT LEGEND TABLE FOR ADDITIONAL HEIGHTS AVAILABLE.

UNLESS OTHERWISE SPECIFIED		ELECTRONIC SYSTEM SUPPORT		3233 W. Kingsley Rd. Ste. 200 Cedarland, Texas 75041 PH: 972-272-2468 FAX: 972-276-2644	
DESIGNS ARE FINISHED DIMENSIONALLY	ANGLES: MATCH D. DIMS	DATE	12-12	TITLE: BATTERY CABINET, 12V, TOP TERMINAL	
TWO PLACE DECIMAL #	THREE PLACE DECIMAL #	DRAWN	BY	SIZE	DWG. NO.
PROJECTION	CONVENTION	DATE		SCALE	ETC36-SPEC
SEE NOTE 1	DATE			SCALE: 1:12	WEIGHT:
SEE NOTE 2	DATE			SCALE: 1:12	WEIGHT:
DO NOT SCALE DRAWING	DATE			SCALE: 1:12	WEIGHT:
USED ON	DATE			SCALE: 1:12	WEIGHT:
PROPRIETARY AND CONFIDENTIAL	SEE REVISIONS CONTAINED IN THIS DRAWING OR IN THE PROPERTY OF ELECTRONIC SYSTEM SUPPORT. ANY DISCLOSURE OF INFORMATION CONTAINED HEREIN TO OTHERS WITHOUT THE WRITTEN PERMISSION OF ELECTRONIC SYSTEM SUPPORT IS PROHIBITED.	DATE		SCALE: 1:12	WEIGHT:

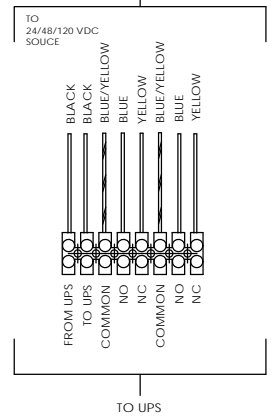
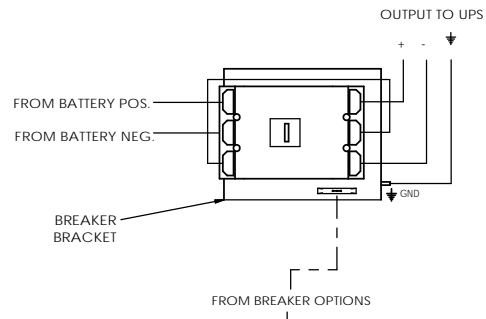


480V SYSTEM WIRING (OPTION 1)

480V SYSTEM WIRING (OPTION 2)

384V SYSTEM WIRING

**BREAKER DETAIL**



AUXILIARY CONTACTS LISTED APPLICABLE WHEN BREAKER IS IN THE CLOSED (ON) POSITION

BATTERY CABINET PART NUMBER GUIDE			
CABINET PART NUMBER	E	A	DESCRIPTION
ETC36AA			BASE PART NUMBER
			CABINET HEIGHT
			CABINET COLOR

BATTERY CONFIGURATION TABLE							
BATTERY MODEL NUMBER	BATTERY MANUFACTURER					MAXIMUM NUMBER OF BATTERIES PER CABINET	
	ENERSYS	C & D	EAST PENN	CSB	GNB		FIAMM
12HX205	UPS12-210MR	45HR2000	HRL12200W	S12V120	S12V170	12FLX200	60
12HX300	UPS12-300MR	24HR3000	HRL12280W	S12V285	S12V300	12FLX250	40
12HX330	UPS12-350MR	27HR3500	HRL12330W	S12V370	S12V300	12FLX350	40
12HX400	UPS12-400MR	31HR4000	HRL12390W	S12V500	S12V300	12FLX400	40
12HX505	UPS12-490MLRP	31HR5000	HRL12500W	S12V500	S12V500	12FLX500	40
12HX540	UPS12-540MR	31HR5500	HRL12550W	S12V550	S12V500	12FLX540	40
6HX800	UPS6-620MR						40

HEIGHT LEGEND	
HEIGHT (INCHES)	AVAILABILITY
A = 84.00	N/A
B = 82.00	N/A
C = 80.00	4-6 WEEKS
D = 79.0	4-6 WEEKS
**E = 78.7	IN STOCK
F = 78.4	4-6 WEEKS
G = 78.0	4-6 WEEKS
H = 77.3	4-6 WEEKS
J = 76.8	4-6 WEEKS
K = 75.3	N/A
L = 75.0	N/A
M = 74.8	N/A
N = 73.5	N/A
P = 72.0	N/A
Q = 71.7	N/A
R = 70.9	N/A
S = TBD	N/A
T = TBD	N/A

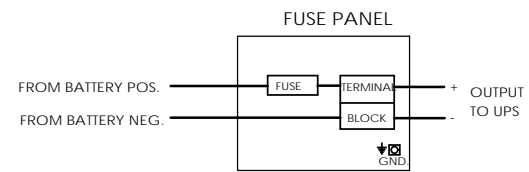
\*\* 78.7 IS THE STANDARD HEIGHT FOR THE ETC36 CABINETS. OTHER HEIGHTS REQUIRE LONGER LEAD TIMES \*\*  
 LETTERS STATING "TBD" ARE OPEN FOR CUSTOM HEIGHTS REQUESTED BY CUSTOMERS. OVERALL CABINET DESIGN WILL BE THE SAME. PLEASE CONSULT WITH SALES STAFF FOR FURTHER INFO.

COLOR LEGEND	
**A = BLACK	
B = BEIGE	
C = LIEBERT GRAY	
D = MITSUBISHI BEIGE	
E = MGE WHITE	
F = TOSHIBA BLACK	
G = GE WHITE	
H = LIEBERT BLACK	
J = EATON BLACK	
K = TBD	
**BLACK IS ESS STANDARD COLOR AND WILL BE IN STOCK **	
LETTERS STATING "TBD" ARE OPEN FOR CUSTOM COLORS NOT LISTED. PLEASE CONSULT WITH SALES STAFF FOR FURTHER INFO.	

**ELECTRICAL NOTES:**

1. ALL CABLES ARE UL LISTED.
2. ALL BREAKERS ARE UL RECOGNIZED.
3. ALL FUSES ARE UL RECOGNIZED, TYPE A50P, A70P OR EQUIVALENT (FUSED CABINETS ARE NOT LISTED IN UL FILE). ALWAYS REPLACE WITH SAME TYPE OR ITS EQUIVALENT.
4. TERMINAL BLOCKS ARE UL RECOGNIZED, 600V RATED.
5. CABINETS ARE SHIPPED WITH THE BREAKER IN THE TRIPPED POSITION.
6. CABINET GROUND CONNECTION IS A 5/16-18 THREADED STUD.
7. CABLES BETWEEN BATTERY CABINET TO UNINTERRUPTIBLE POWER SUPPLY ARE OPTIONAL.

**FUSE OPTION**



**PART NUMBER GUIDE:**

1. REFERENCE THE BATTERY PART NUMBER GUIDE TABLE WHEN ORDERING A CABINET.
2. THE BASE NUMBER WILL ALWAYS BE THE SAME. HOWEVER, 2 ALPHA DIGITS WILL FOLLOW THE BASE NUMBER INDICATING THE HEIGHT AND COLOR OF THE CABINET.
3. REFERENCE THE "HEIGHT LEGEND" TABLE AND THE "COLOR LEGEND" TABLE IN ORDER TO DETERMINE THE 2 ALPHA DIGITS NEEDED TO COMPLETE YOUR ORDER.
4. EXAMPLE: ETC36EA - THIS REPRESENTS A STANDARD ETC36 CABINET, 78.7" HEIGHT WITH A POWDER COAT FINISH OF STANDARD BLACK.
5. NON STANDARD HEIGHTS REQUIRE AN ADDITIONAL 2-3 WEEKS LEAD TIME.

PROPRIETARY AND CONFIDENTIAL SEE INFORMATION CONTAINED IN THIS DRAWING FOR THE DATE REVISIONS OR ELECTRICAL SYSTEM APPROVAL. ANY USE OF THIS DRAWING WITHOUT THE WRITTEN PERMISSION OF ELECTRONIC SYSTEMS SUPPORT IS PROHIBITED.	UNLESS OTHERWISE SPECIFIED: DIMENSIONS ARE IN INCHES FRACTIONS ARE IN 16ths DECIMALS ARE IN 10ths DIMENSIONS IN PARENTHESES ARE FOR INFORMATION ONLY	<b>ESS</b> ELECTRONIC SYSTEMS SUPPORT 888-475-9292 www.ess.io	3233 W. Kingsley Rd. Ste. 200 Carrollton, Texas 75041 PH: 972-272-2448 FAX: 972-272-2444
	USED ON	PROJECT:	TITLE: BATTERY CABINET, 12V, TOP TERMINAL