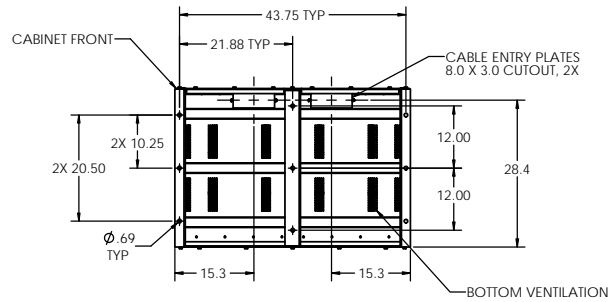
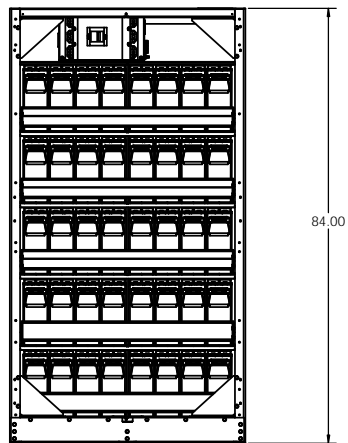
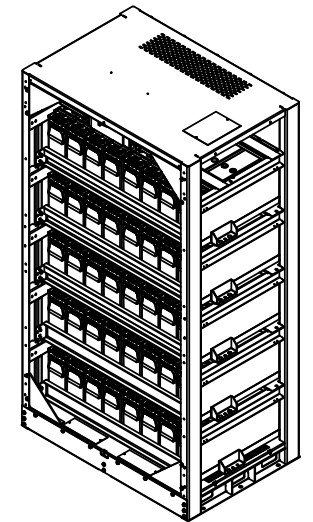


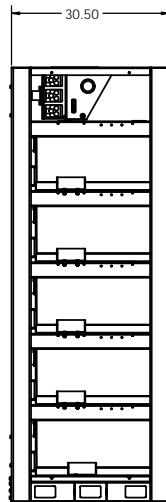
TOP VIEW



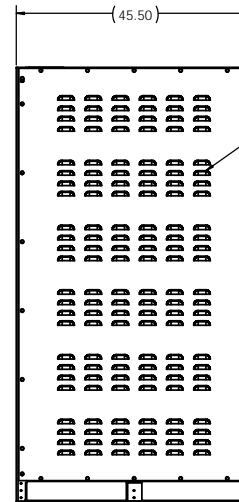
SECTION A-A  
BOTTOM VIEW



FRONT VIEW



SIDE VIEW



REAR VIEW

VENTILATION  
LOUVERS

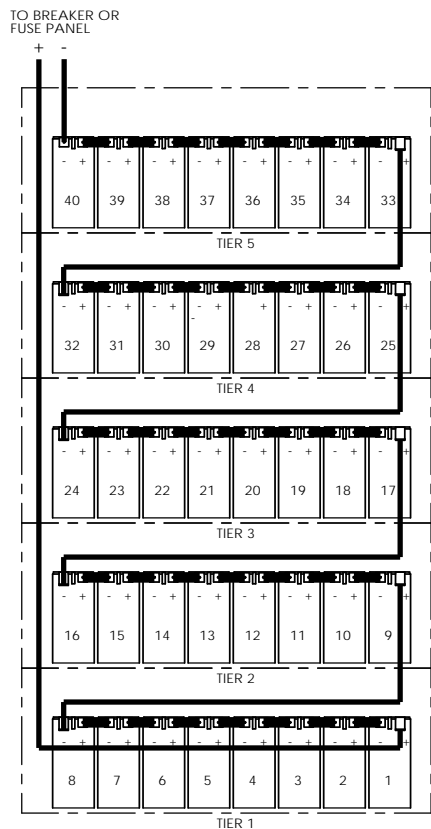
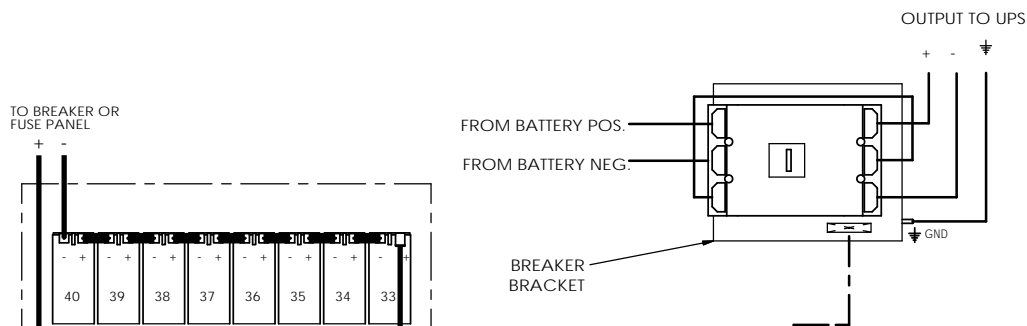
RACK NOTES:

1. EMPTY RACK WEIGHT: 700 LBS
2. FULLY WELDED FRAME. MANUFACTURED FROM HEAVY GAUGE STEEL.
3. POWDER COATED WITH A CORROSION RESISTANT POWDER USING A FIVE STAGE EMERSON PRETREATMENT PROCESS.
4. BATTERIES CAN BE ACCESSED FROM FRONT, REAR, AND BOTH SIDES.
5. CUSTOM DESIGNED PALLETS FOR SHIPPING ANYWHERE LOCALLY AND GLOBALLY (UPON REQUEST).
6. BATTERY RACK CAN BE MOVED WITH A NORMAL PALLET JACK FROM FRONT AND REAR.
7. STANDARD AND CUSTOM SPILL CONTAINMENT OPTIONS ARE AVAILABLE.

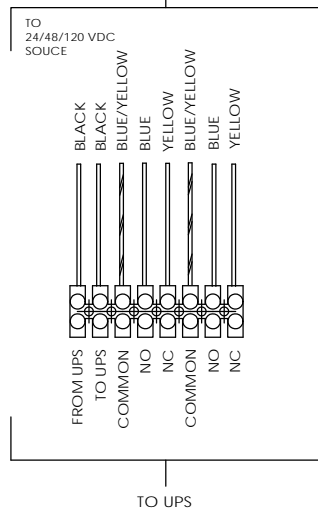
UNLESS OTHERWISE SPECIFIED		ELECTRONIC SYSTEM SUPPORT		3233 W. Kingsley Rd. Ste. 200 Chandler, Texas 75048 PH: 972-372-2448 FAX: 972-372-9844	
DESIGNS ARE FINISHED DIMENSIONS	INCHES	888-475-9292	www.ess.io	TITLE: BATTERY RACK, 12V, 480V, HD	
ANGLES: MATCH 3, 90°	3	DATE: 12-13	REV: 1	SIZE: DWG. NO. EFR54-SPEC	
2ND PLACE DECIMAL: #01	2	CHECKED:	DATE:	REV: A	
3RD PLACE DECIMAL: #001	3	DATE:	DATE:	SCALE: 1:12 (WEIGHT)	
PROJECTION: 1st Angle	1	DATE:	DATE:	SHEET 1 OF 2	
PROJ: SEE NOTE 1	1	DATE:	DATE:		
PROJ: SEE NOTE 2	2	DATE:	DATE:		
DO NOT SCALE DRAWING	1	DATE:	DATE:		
USED ON	2	DATE:	DATE:		

PROPRIETARY AND CONFIDENTIAL  
SEE INFORMATION CONTAINED IN THIS  
DRAWING OR THE DATA THEREOF OR  
ELECTRONIC SYSTEM SUPPORT AND  
ELECTRONIC SYSTEM SUPPORT IS A TRADE  
SECRET OR UNPUBLISHED INFORMATION  
ELECTRONIC SYSTEMS SUPPORT IS  
REGISTERED.

### BREAKER DETAIL

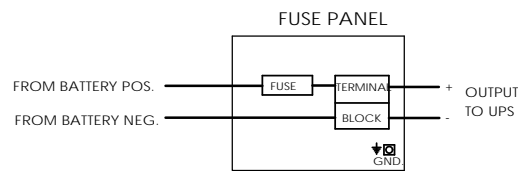


### FROM BREAKER OPTIONS



AUXILIARY CONTACTS LISTED APPLICABLE WHEN BREAKER IS IN THE CLOSED (ON) POSITION

### FUSE OPTION



BATTERY RACK PART NUMBER GUIDE			
RACK PART NUMBER		DESCRIPTION	
EFR54	A A		
		BASE PART NUMBER	
		RACK HEIGHT	
		RACK COLOR	

BATTERY CONFIGURATION TABLE		
	BATTERY MANUFACTURER	MAXIMUM NUMBER OF BATTERIES PER RACK
	EAST PENN	
BATTERY MODEL NUMBER	HR5500ET	40
	HR7500ET	

HEIGHT LEGEND	
HEIGHT (INCHES)	AVAILABILITY
**A = 84.00	IN STOCK
B = 82.00	N/A
C = 80.00	N/A
D = 79.0	N/A
E = 78.7	N/A
F = 78.4	N/A
G = 78.0	N/A
H = 77.3	N/A
J = 76.8	N/A
K = 75.3	N/A
L = 75.0	N/A
M = 74.8	N/A
N = 73.5	N/A
P = 72.0	N/A
Q = 71.7	N/A
R = 70.9	N/A
S = TBD	N/A
T = TBD	N/A

\*\* 84.0 IS THE STANDARD HEIGHT FOR THE EFR54 RACKS. SHORTER HEIGHTS ARE NOT AVAILABLE\*\* PLEASE CONSULT WITH SALES STAFF FOR FURTHER INFO.

COLOR LEGEND
**A = BLACK
B = BEIGE
C = LIEBERT GRAY
D = MITSUBISHI BEIGE
E = MGE WHITE
F = TOSHIBA BLACK
G = GE WHITE
H = LIEBERT BLACK
J = EATON BLACK
K = TBD

\*\*BLACK IS ESS STANDARD COLOR AND WILL BE IN STOCK\*\* LETTERS STATING "TBD" ARE OPEN FOR CUSTOM COLORS NOT LISTED. PLEASE CONSULT WITH SALES STAFF FOR FURTHER INFO.

### PART NUMBER GUIDE:

1. REFERENCE THE BATTERY PART NUMBER GUIDE TABLE WHEN ORDERING A RACK.
2. THE BASE NUMBER WILL ALWAYS BE THE SAME. HOWEVER, 2 ALPHA DIGITS WILL FOLLOW THE BASE NUMBER INDICATING THE HEIGHT AND COLOR OF THE RACK.
3. REFERENCE THE "HEIGHT LEGEND" TABLE AND THE "COLOR LEGEND" TABLE IN ORDER TO DETERMINE THE 2 ALPHA DIGITS NEEDED TO COMPLETE YOUR ORDER.
4. EXAMPLE: EFR54AA - THIS REPRESENTS A STANDARD EFR54 RACK, 84.0 INCH HEIGHT WITH A POWDER COAT FINISH OF STANDARD BLACK.
5. THE EFR54 RACK IS NOT AVAILABLE IN OTHER HEIGHTS OTHER THAN 84.0 INCHES.

### ELECTRICAL NOTES:

1. ALL CABLES ARE UL LISTED.
2. ALL BREAKERS ARE UL RECOGNIZED.
3. ALL FUSES ARE UL RECOGNIZED, TYPE A50P, A70P OR EQUIVALENT. ALWAYS REPLACE WITH SAME TYPE OR ITS EQUIVALENT.
4. TERMINAL BLOCKS ARE UL RECOGNIZED, 600V RATED.
5. RACKS ARE SHIPPED WITH THE BREAKER IN THE TRIPPED POSITION.
6. RACK GROUND CONNECTION IS A 5/16-18 THREADED STUD.
7. CABLES BETWEEN BATTERY RACK TO UNINTERRUPTIBLE POWER SUPPLY ARE OPTIONAL.

UNLESS OTHERWISE SPECIFIED DIMENSIONS ARE IN INCHES		<b>ELECTRONIC SYSTEM SUPPORT</b> 888-475-9292 www.ess.io		3233 W. Kingsley Rd. Ste. 200 Garland, Texas 75041 PH: 972-272-2446 FAX: 972-276-1844	
PROPRIETARY AND CONFIDENTIAL	SEE NOTE 1	DATE	12-13	TITLE	BATTERY RACK, 12V, 480V, HD
DO NOT SCALE DRAWING	SEE NOTE 2	SCALE	1:1	SIZE	D
		REV		DWG. NO.	EFR54-SPEC
		SCALE	1:1	WEIGHT	
				REV	A
					SHEET 2 OF 2