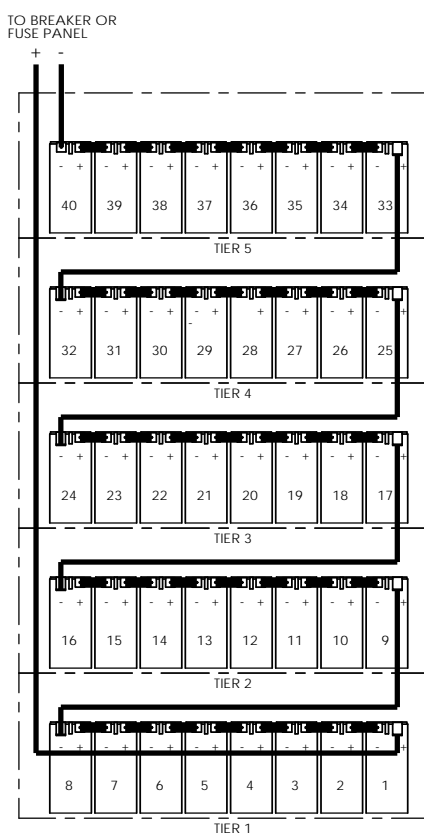


RACK NOTES:

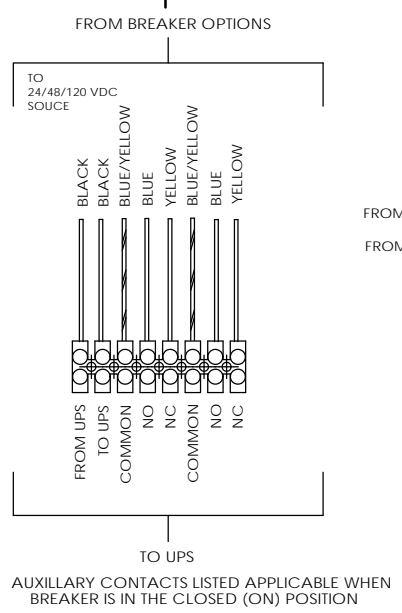
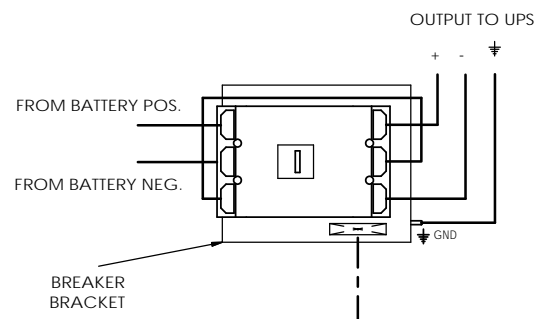
1. EMPTY RACK WEIGHT: 670 LBS.
2. FULLY WELDED FRAME - MANUFACTURED FROM HEAVY GAUGE STEEL.
3. POWDER COATED WITH A CORROSION RESISTANT POWDER USING A FIVE STAGE EMERSON PRETREATMENT PROCESS.
4. BATTERIES CAN BE ACCESSED FROM FRONT, REAR, AND BOTH SIDES.
5. CUSTOM DESIGNED PALLETS FOR SHIPPING ANYWHERE LOCALLY AND GLOBALLY (UPON REQUEST).
6. BATTERY RACK CAN BE MOVED WITH A NORMAL PALLET JACK FROM FRONT AND REAR.
7. STANDARD AND CUSTOM SPILL CONTAINMENT OPTIONS ARE AVAILABLE.

UNLESS OTHERWISE SPECIFIED:		ELECTRIC SYSTEM SUPPORT		3233 W. Kingsley Rd. Ste. 200 Cape Land, Texas 75641 PH: 937-272-2468 FAX: 937-276-5844	
ALL DIMENSIONS ARE IN INCHES UNLESS OTHERWISE SPECIFIED.	ANGLES: MATCH D. BEND	DATE	12-13	TITLE	BATTERY RACK, 12V, 480V
TWO PLACE DECIMAL	THREE PLACE DECIMAL	DRAWN		SIZE	D
THREE PLACE DECIMAL	FOUR PLACE DECIMAL	CHECKED		DWG. NO.	EFR52-SPEC
PROJECTION	SEE NOTE 1	DATE		SCALE	1:1
SEE NOTE 2	SEE NOTE 2	SCALE		WEIGHT	A
DO NOT SCALE DRAWING	DO NOT SCALE DRAWING	SCALE		SHEET	1 OF 2

PROPRIETARY AND CONFIDENTIAL
SEE INFORMATION CONTAINED IN THIS DRAWING FOR THE DATE OF PREPARED BY
ELECTRIC SYSTEM SUPPORT, A DIVISION
OF EMERSON ELECTRIC TECHNOLOGIES
ELECTRIC SYSTEMS SUPPORT IS
REGISTERED.

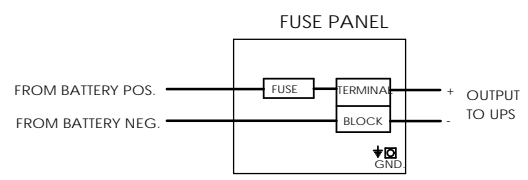


BREAKER DETAIL



AUXILIARY CONTACTS LISTED APPLICABLE WHEN BREAKER IS IN THE CLOSED (ON) POSITION

FUSE OPTION



BATTERY RACK PART NUMBER GUIDE			
RACK PART NUMBER		DESCRIPTION	
EFR52	A	A	
		BASE PART NUMBER	
		RACK HEIGHT	
		RACK COLOR	

BATTERY CONFIGURATION TABLE				
BATTERY MODEL NUMBER	BATTERY MANUFACTURER			MAXIMUM NUMBER OF BATTERIES PER RACK
	EAST PENN	C & D	FIAMM	
HR3500ET	HR3500ET	UPS 12-355MFR	12FLX700F	40
	HR5500ET	UPS 12-615MRF		
		UPS 12-700MRF		

HEIGHT LEGEND	
HEIGHT (INCHES)	AVAILABILITY
**A = 84.00	IN STOCK
B = 82.00	N/A
C = 80.00	N/A
D = 79.0	N/A
E = 78.7	N/A
F = 78.4	N/A
G = 78.0	N/A
H = 77.3	N/A
J = 76.8	N/A
K = 75.3	N/A
L = 75.0	N/A
M = 74.8	N/A
N = 73.5	N/A
P = 72.0	N/A
Q = 71.7	N/A
R = 70.9	N/A
S = TBD	N/A
T = TBD	N/A

** 84.0 IS THE STANDARD HEIGHT FOR THE EFR52 RACKS. SHORTER HEIGHTS ARE NOT AVAILABLE** PLEASE CONSULT WITH SALES STAFF FOR FURTHER INFO.

COLOR LEGEND
**A = BLACK
B = BEIGE
C = LIEBERT GRAY
D = MITSUBISHI BEIGE
E = MGE WHITE
F = TOSHIBA BLACK
G = GE WHITE
H = LIEBERT BLACK
J = EATON BLACK
K = TBD

BLACK IS ESS STANDARD COLOR AND WILL BE IN STOCK
 **LETTERS STARTING "TBD" ARE OPEN FOR CUSTOM COLORS NOT LISTED. PLEASE CONSULT WITH SALES STAFF FOR FURTHER INFO.

PART NUMBER GUIDE:

1. REFERENCE THE BATTERY PART NUMBER GUIDE TABLE WHEN ORDERING A RACK.
2. THE BASE NUMBER WILL ALWAYS BE THE SAME. HOWEVER, 2 ALPHA DIGITS WILL FOLLOW THE BASE NUMBER INDICATING THE HEIGHT AND COLOR OF THE RACK.
3. REFERENCE THE "HEIGHT LEGEND" TABLE AND THE "COLOR LEGEND" TABLE IN ORDER TO DETERMINE THE 2 ALPHA DIGITS NEEDED TO COMPLETE YOUR ORDER.
4. EXAMPLE: EFR52AA - THIS REPRESENTS A STANDARD EFR52 CABINET, 84.0 INCH HEIGHT WITH A POWDER COAT FINISH OF STANDARD BLACK.
5. THE EFR52 RACK IS NOT AVAILABLE IN OTHER HEIGHTS OTHER THAN 84.0 INCHES.

ELECTRICAL NOTES:

1. ALL CABLES ARE UL LISTED.
2. ALL BREAKERS ARE UL RECOGNIZED.
3. ALL FUSES ARE UL RECOGNIZED, TYPE A50P, A70P OR EQUIVALENT. ALWAYS REPLACE WITH SAME TYPE OR ITS EQUIVALENT.
4. TERMINAL BLOCKS ARE UL RECOGNIZED, 600V RATED.
5. RACKS ARE SHIPPED WITH THE BREAKER IN THE TRIPPED POSITION.
6. RACK GROUND CONNECTION IS A 5/16-18 THREADED STUD.
7. CABLES BETWEEN BATTERY RACKS TO UNINTERRUPTIBLE POWER SUPPLY ARE OPTIONAL.

<small>PROPRIETARY AND CONFIDENTIAL</small> <small>SEE INFORMATION CONTAINED IN THIS DRAWING FOR THE DATE OF REVISION OR FOR ELECTRONIC SYSTEMS SUPPORT. ANY REVISIONS TO THIS DRAWING SHALL BE MADE IN ACCORDANCE WITH THE REVISIONS LISTED IN THE ELECTRONIC SYSTEMS SUPPORT SYSTEM.</small>	<small>UNLESS OTHERWISE SPECIFIED</small> <small>ALL DIMENSIONS ARE IN INCHES</small> <small>DECIMALS ARE INCHES</small> <small>THIS DRAWING IS A COPY OF THE ORIGINAL DRAWING</small>	<small>ESS ELECTRONIC SYSTEM SUPPORT</small> <small>888-475-9292 www.ess.io</small>	<small>3233 W. Kingsley Rd.</small> <small>Box 200</small> <small>Garland, Texas 75041</small> <small>PH: 972-272-2448</small> <small>FAX: 972-272-9844</small>
	<small>DATE</small> <small>ISSUED</small> <small>REVISED</small> <small>BY</small> <small>FOR</small> <small>SCALE</small>	<small>DATE</small> <small>ISSUED</small> <small>REVISED</small> <small>BY</small> <small>FOR</small> <small>SCALE</small>	<small>DATE</small> <small>ISSUED</small> <small>REVISED</small> <small>BY</small> <small>FOR</small> <small>SCALE</small>

USED ON: []

SIZE: **D** DWG. NO: EFC52-SPEC REV: A

SCALE: 1:12 WEIGHT: SHEET 2 OF 2