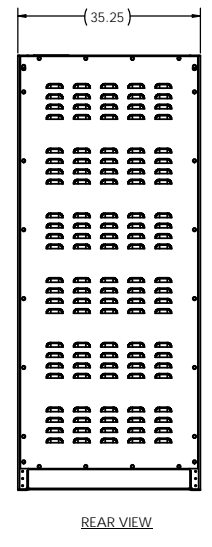
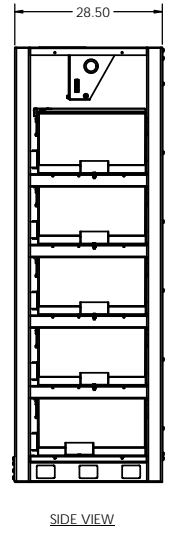
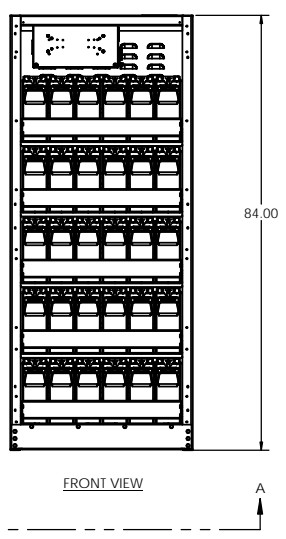
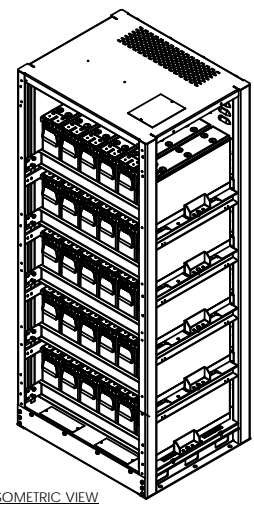


SECTION A-A

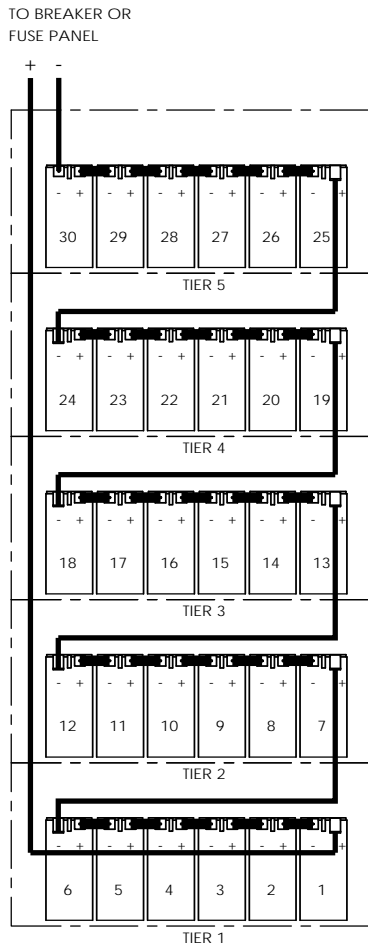


**RACK NOTES:**

- EMPTY RACK WEIGHT: 465 LBS.
- FULLY WELDED FRAME. MANUFACTURED FROM HEAVY GAUGE STEEL.
- POWDER COATED WITH A CORROSION RESISTANT POWDER USING A FIVE STAGE EMERSON PRETREATMENT PROCESS.
- BATTERIES CAN BE ACCESSED FROM FRONT, REAR, AND BOTH SIDES.
- CUSTOM DESIGNED PALLETS FOR SHIPPING ANYWHERE LOCALLY AND GLOBALLY (UPON REQUEST).
- BATTERY RACK CAN BE MOVED WITH A NORMAL PALLET JACK FROM FRONT AND REAR.
- STANDARD AND CUSTOM SPILL CONTAINMENT OPTIONS ARE AVAILABLE.

UNLESS OTHERWISE SPECIFIED:		ELECTRONIC SYSTEM SUPPORT		3233 W. Kingsley Rd. Ste. 200 Cedarburg, Wis. 53001 PH: 972-372-2444 FAX: 972-270-9844	
ALL DIMENSIONS ARE IN INCHES UNLESS OTHERWISE SPECIFIED.	ANGLES: MATCH D. BEND	DATE:	12-13	TITLE: BATTERY RACK, 12V, 6 X 5, 6 WIDE	
THIRD PLACE DECIMAL: #	FOURTH PLACE DECIMAL: #	DESIGNED BY:	CHKD BY:	SIZE: D	DWG. NO: EFRS-1-SPEC
PROJECTION: 1st Angle	SEE NOTE 1	ISSUED BY:	DATE:	SCALE: 1:12	WEIGHT: A
USED ON:	SEE NOTE 2	DATE:			REV: 1 OF 2
DO NOT SCALE DRAWING					

PROPRIETARY AND CONFIDENTIAL  
SEE INFORMATION CONTAINED IN THIS DRAWING FOR THE DATE OF PREPARE AND FOR THE DATE OF ANY REVISIONS. THIS DRAWING IS THE PROPERTY OF ELECTRONIC SYSTEM SUPPORT. ANY UNAUTHORIZED REPRODUCTION OR USE OF THIS DRAWING WITHOUT THE WRITTEN PERMISSION OF ELECTRONIC SYSTEM SUPPORT IS PROHIBITED.

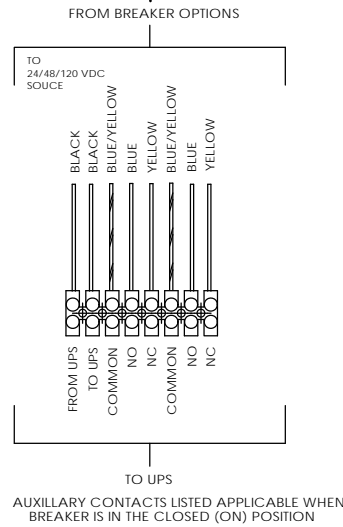
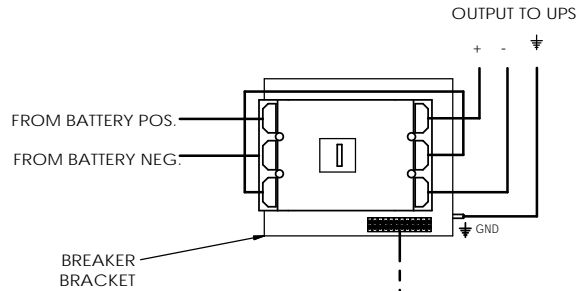


TYP 360VDC WIRING

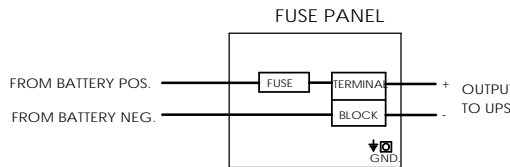
**ELECTRICAL NOTES:**

1. ALL CABLES ARE UL LISTED.
2. ALL BREAKERS ARE UL RECOGNIZED.
3. ALL FUSES ARE UL RECOGNIZED, TYPE A50P, A70P OR EQUIVALENT. ALWAYS REPLACE WITH SAME TYPE OR ITS EQUIVALENT.
4. TERMINAL BLOCKS ARE UL RECOGNIZED, 600V RATED.
5. RACKS ARE SHIPPED WITH THE BREAKER IN THE TRIPPED POSITION.
6. RACKS GROUND CONNECTION IS A 5/16-18 THREADED STUD.
7. CABLES BETWEEN BATTERY RACKS TO UNINTERRUPTIBLE POWER SUPPLY ARE OPTIONAL.

**BREAKER DETAIL**



**FUSE OPTION**



BATTERY RACK PART NUMBER GUIDE			
RACK PART NUMBER		DESCRIPTION	
EFR51	A	A	
		BASE PART NUMBER	
		RACK HEIGHT	
		RACK COLOR	

BATTERY CONFIGURATION TABLE				
BATTERY MODEL NUMBER	BATTERY MANUFACTURER			MAXIMUM NUMBER OF BATTERIES PER RACK
	EAST PENN	C & D	FIAMM	
	HR3500ET	UPS 12-355MFR		30
	HR5500ET	UPS 12-615MRF		30
		UPS 12-700MRF	12FLX700F	

HEIGHT LEGEND	
HEIGHT (INCHES)	AVAILABILITY
**A = 84.00	IN STOCK
B = 82.00	N/A
C = 80.00	N/A
D = 79.0	N/A
E = 78.7	N/A
F = 78.4	N/A
G = 78.0	N/A
H = 77.3	N/A
J = 76.8	N/A
K = 75.3	N/A
L = 75.0	N/A
M = 74.8	N/A
N = 73.5	N/A
P = 72.0	N/A
Q = 71.7	N/A
R = 70.9	N/A
S = TBD	N/A
T = TBD	N/A

\*\* 84.0 IS THE STANDARD HEIGHT FOR THE EFR51 RACK. SHORTER HEIGHTS ARE NOT AVAILABLE\*\*  
PLEASE CONSULT WITH SALES STAFF FOR FURTHER INFO.

COLOR LEGEND	
**A = BLACK	
B = BEIGE	
C = LIEBERT GRAY	
D = MITSUBISHI BEIGE	
E = MGE WHITE	
F = TOSHIBA BLACK	
G = GE WHITE	
H = LIEBERT BLACK	
J = EATON BLACK	
K = TBD	

\*\*BLACK IS ESS STANDARD COLOR AND WILL BE IN STOCK\*\*  
LETTERS STATING "TBD" ARE OPEN FOR CUSTOM COLORS NOT LISTED. PLEASE CONSULT WITH SALES STAFF FOR FURTHER INFO.

**PART NUMBER GUIDE:**

1. REFERENCE THE BATTERY PART NUMBER GUIDE TABLE WHEN ORDERING A RACK.
2. THE BASE NUMBER WILL ALWAYS BE THE SAME. HOWEVER, 2 ALPHA DIGITS WILL FOLLOW THE BASE NUMBER INDICATING THE HEIGHT AND COLOR OF THE RACK.
3. REFERENCE THE "HEIGHT LEGEND" TABLE AND THE "COLOR LEGEND" TABLE IN ORDER TO DETERMINE THE 2 ALPHA DIGITS NEEDED TO COMPLETE YOUR ORDER.
4. EXAMPLE: EFR51AA - THIS REPRESENTS A STANDARD EFR51 RACK, 84.0 INCH HEIGHT WITH A POWDER COAT FINISH OF STANDARD BLACK.
5. THE EFR51 RACK IS NOT AVAILABLE IN OTHER HEIGHTS OTHER THAN 84.0 INCHES.

UNLESS OTHERWISE SPECIFIED		ELECTRONIC SYSTEM SUPPORT		3231 W. Kingsley Rd. Ste. 200 Cedarburg, Texas 75041 PH: 972-372-2445 FAX: 972-276-9844	
DESIGNER: MARCH 5, 2010	DATE: 12-13	ISSUED BY: [Signature]	DATE: 12-13	TITLE: BATTERY RACK, 12V, 6 X 5, 6 WIDE	REV: A
PROJECT: SEE NOTE 1	DATE: 12-13	ISSUED BY: [Signature]	DATE: 12-13	SIZE: D	DWG. NO: EFR51-SPEC
ISSUED BY: [Signature]	DATE: 12-13	ISSUED BY: [Signature]	DATE: 12-13	SCALE: 1:1	WEIGHT: A
USED ON: [Signature]	DATE: 12-13	ISSUED BY: [Signature]	DATE: 12-13	SCALE: 1:1	WEIGHT: A