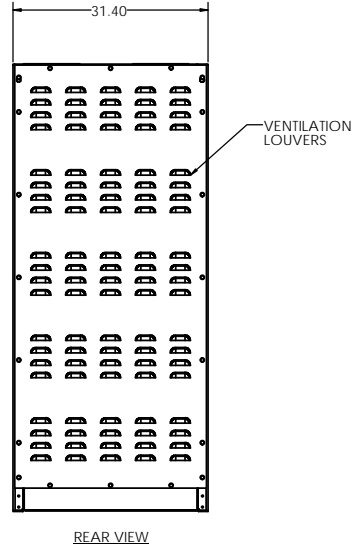
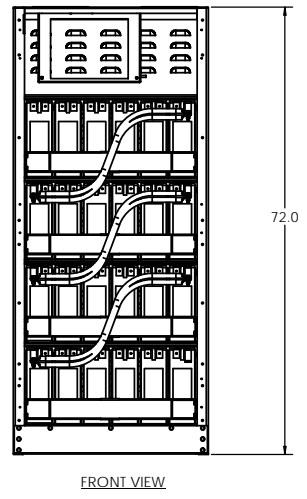
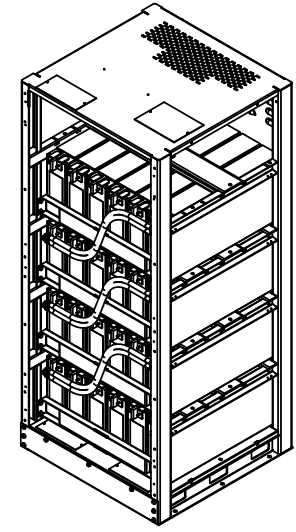
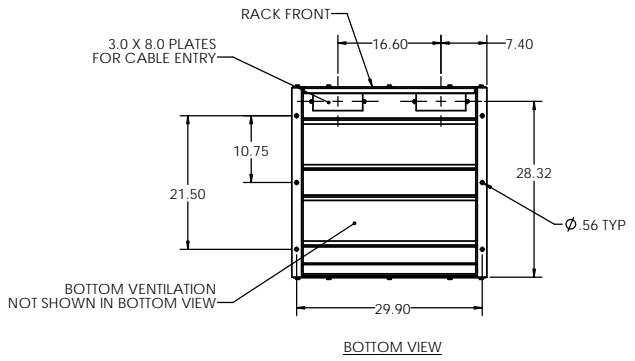
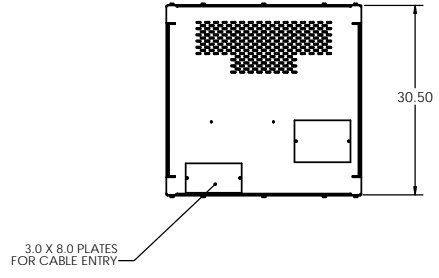


8 7 6 5 4 3 2 1

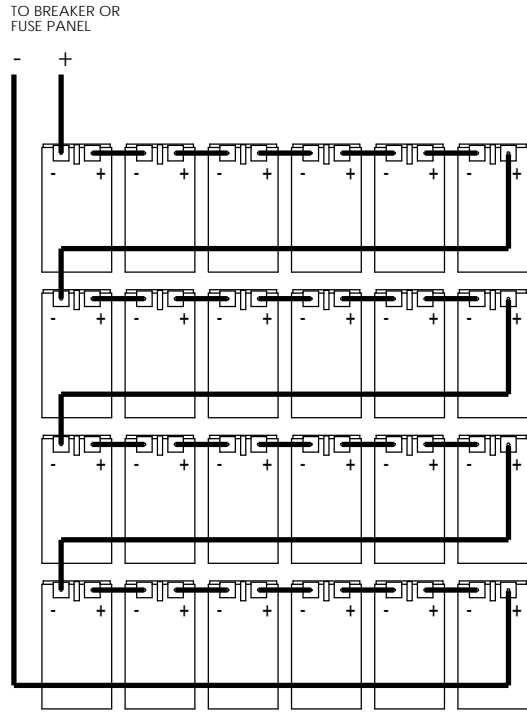


RACK NOTES:

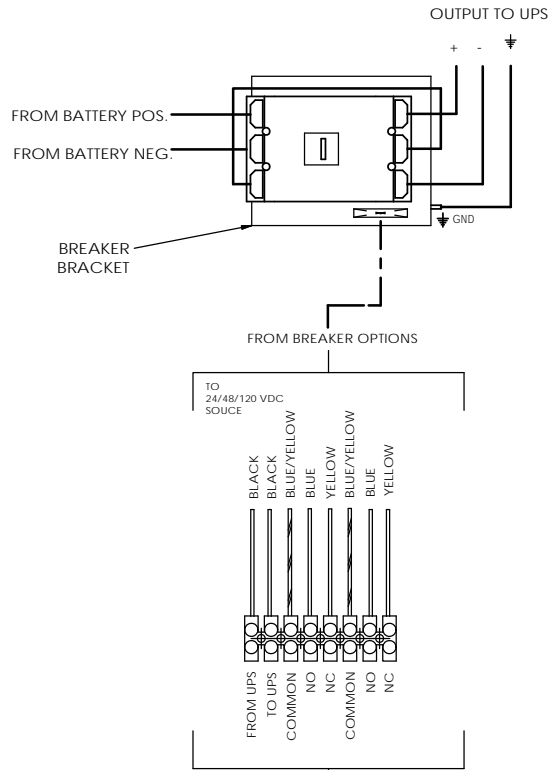
1. EMPTY RACK WEIGHT: 420 LBS.
2. FULLY WELDED FRAME. MANUFACTURED FROM HEAVY GAUGE STEEL.
3. POWDER COATED WITH A CORROSION RESISTANT, EPOXY HYBRID POWDER USING A FIVE STAGE EMERSION PRETREATMENT PROCESS.
4. BATTERIES CAN BE ACCESSED FROM FRONT, REAR, AND BOTH SIDES.
5. CUSTOM DESIGNED PALLETS FOR SHIPPING ANYWHERE, LOCALLY AND GLOBALLY.
6. BATTERY RACK CAN BE MOVED WITH A NORMAL PALLET JACK FROM FRONT AND REAR.
7. STANDARD AND CUSTOM SPILL CONTAINMENT OPTIONS ARE AVAILABLE.

UNLESS OTHERWISE SPECIFIED DIMENSIONS ARE IN INCHES		ELECTRONIC SYSTEM SUPPORT 888-475-9292 www.ess.io		3233 W. Kingsley Rd. Ste. 200 Garland, Texas 75041 PH: 972-272-3440 FAX: 972-276-9844
PROJ: _____	DATE: 12-13	TITLE: RACK, BATTERY		
DESIGNED BY: _____	DATE: _____	4 TIER/TOP BRKR. 16V FT (550)		
CHECKED BY: _____	DATE: _____	SIZE: D	DWG. NO: EFR4B-SPEC	REV: A
ISSUED BY: _____	DATE: _____	SCALE: 1:1	WEIGHT: _____	SHEET 1 OF 2
USED ON: _____	DATE: _____			

8 7 6 5 4 3 2 1

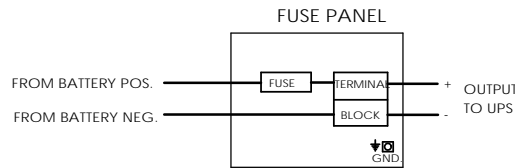


BREAKER DETAIL



TO UPS
AUXILIARY CONTACTS LISTED APPLICABLE WHEN BREAKER IS IN THE CLOSED (ON) POSITION

FUSE OPTION



ELECTRICAL NOTES:

1. ALL CABLES ARE UL LISTED.
2. ALL BREAKERS ARE UL RECOGNIZED.
3. ALL FUSES ARE UL RECOGNIZED, TYPE A50P, A70P OR EQUIVALENT. (FUSED RACKS ARE NOT LISTED IN UL FILE). ALWAYS REPLACE WITH SAME TYPE OR ITS EQUIVALENT.
4. TERMINAL BLOCKS ARE UL RECOGNIZED, 600V RATED.
5. RACKS ARE SHIPPED WITH THE BREAKER IN THE TRIPPED POSITION.
6. RACK GROUND CONNECTION IS A 5/16-18 THREADED STUD.
7. CABLES BETWEEN BATTERY RACK TO UNINTERRUPTIBLE POWER SUPPLY ARE OPTIONAL.

BATTERY RACK PART NUMBER GUIDE			DESCRIPTION
RACK PART NUMBER	P	A	
EFR4B			BASE PART NUMBER
			RACK HEIGHT
			RACK COLOR

BATTERY CONFIGURATION TABLE		
BATTERY MODEL NUMBER	BATTERY MANUFACTURER	MAXIMUM NUMBER OF BATTERIES PER RACK
	ENERSYS	
	16HX550F-FR	24

HEIGHT LEGEND		AVAILABILITY
A = 84.00		N/A
B = 82.00		N/A
C = 80.00		4-6 WEEKS
D = 79.0		4-6 WEEKS
E = 78.7		4-6 WEEKS
F = 78.4		4-6 WEEKS
G = 78.0		4-6 WEEKS
H = 77.3		4-6 WEEKS
J = 76.8		4-6 WEEKS
K = 75.3		4-6 WEEKS
L = 75.4		4-6 WEEKS
M = 74.8		4-6 WEEKS
N = 73.5		4-6 WEEKS
**P = 72.0		IN STOCK
Q = 71.7		N/A
R = 70.9		N/A
S = TBD		N/A
T = TBD		N/A

** 72.0 IS THE STANDARD HEIGHT FOR THE EFR5B RACK. SHORTER HEIGHTS ARE NOT AVAILABLE.**
PLEASE CONSULT WITH SALES STAFF FOR FURTHER INFO.

COLOR LEGEND	
**A = BLACK	LETTERS STATING "TBD" ARE OPEN FOR CUSTOM COLORS NOT LISTED. PLEASE CONSULT WITH SALES STAFF FOR FURTHER INFO.
B = BEIGE	
C = LIEBERT GRAY	
D = MITSUBISHI BEIGE	
E = MGE WHITE	
F = TOSHIBA BLACK	
G = GE WHITE	
H = LIEBERT BLACK	
J = EATON BLACK	
K = TBD	

PART NUMBER GUIDE:

1. REFERENCE THE BATTERY PART NUMBER GUIDE TABLE WHEN ORDERING A RACK.
2. THE BASE NUMBER WILL ALWAYS BE THE SAME. HOWEVER, 2 ALPHA DIGITS WILL FOLLOW THE BASE NUMBER INDICATING THE HEIGHT AND COLOR OF THE RACK.
3. REFERENCE THE "HEIGHT LEGEND" TABLE AND THE "COLOR LEGEND" TABLE IN ORDER TO DETERMINE THE 2 ALPHA DIGITS NEEDED TO COMPLETE YOUR ORDER.
4. EXAMPLE: EFR4BPA - THIS REPRESENTS A STANDARD EFR4B RACK, 72.0 INCH HEIGHT WITH A POWDER COAT FINISH OF STANDARD BLACK.

UNLESS OTHERWISE SPECIFIED		2233 W. Kingsley Rd. Ste. 200 Cedarland, Texas 75041 PH: 972-272-2448 FAX: 972-272-1844	
DESIGNER: MACH 1 S. BEND	DATE: 12-13	ELECTRONIC SYSTEM SUPPORT 888-475-9292 www.ess.io	
THIS DRAWING IS THE PROPERTY OF ELECTRONIC SYSTEM SUPPORT. ANY REPRODUCTION OR TRANSMISSION OF THIS DRAWING WITHOUT THE WRITTEN PERMISSION OF ELECTRONIC SYSTEM SUPPORT IS PROHIBITED.	ISSUED ON: SEE NOTE 1	SCALE: 1:16	WEIGHT: 4 TIER/TOP BRKR, 16V FT (550)
REVISION: SEE NOTE 2	DATE: 12-13	SIZE: D	DWG. NO: EFR4B-SPEC
DO NOT SCALE DRAWING	SCALE: 1:16	REV: A	SHEET 2 OF 2