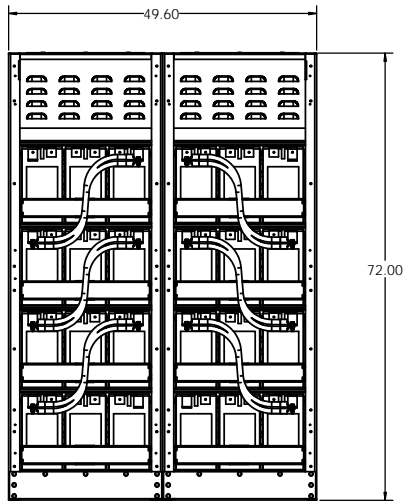
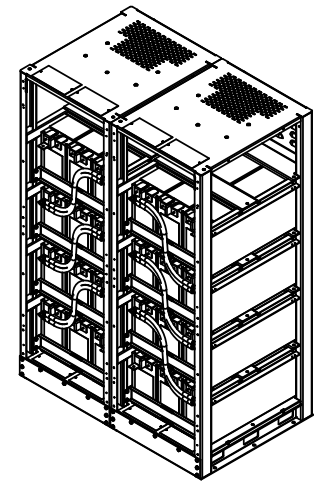
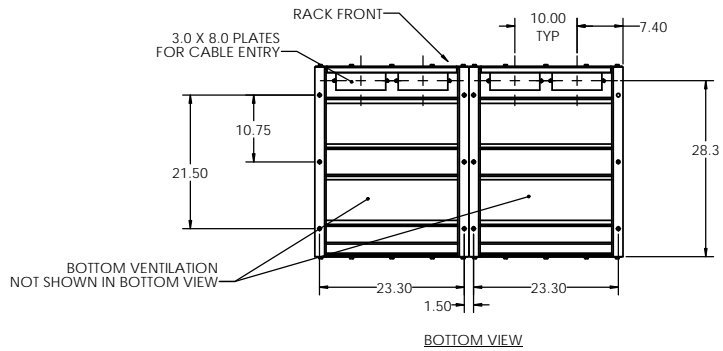
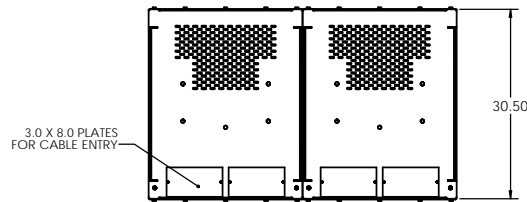
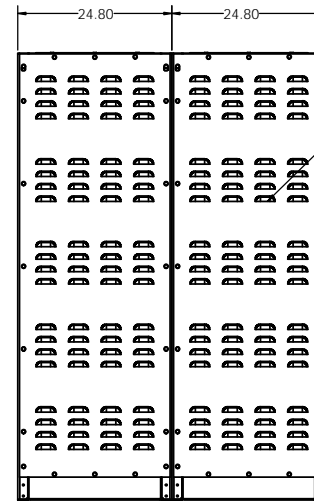


8 7 6 5 4 3 2 1



FRONT VIEW



REAR VIEW

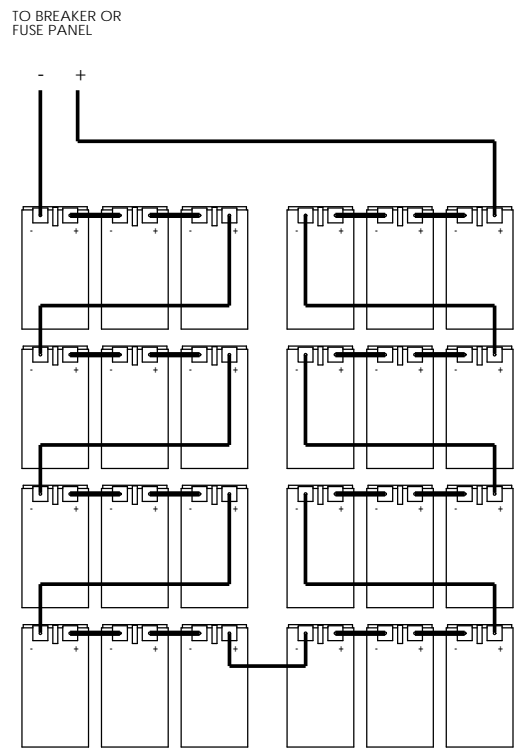
RACK NOTES:

1. EMPTY RACK WEIGHT: 640 LBS TOTAL WEIGHT (2 RACKS) ONE 384V STRING.
2. FULLY WELDED FRAME - MANUFACTURED FROM HEAVY GAUGE STEEL.
3. POWDER COATED WITH A CORROSION RESISTANT, EPOXY HYBRID POWDER USING A FIVE STAGE EMERSION PRETREATMENT PROCESS.
4. BATTERIES CAN BE ACCESSED FROM FRONT, REAR, AND BOTH SIDES.
5. CUSTOM DESIGNED PALLETS FOR SHIPPING ANYWHERE, LOCALLY AND GLOBALLY (UPON REQUEST).
6. BATTERY RACK CAN BE MOVED WITH A NORMAL PALLET JACK FROM FRONT AND REAR.
7. STANDARD AND CUSTOM SPILL CONTAINMENT OPTIONS ARE AVAILABLE.

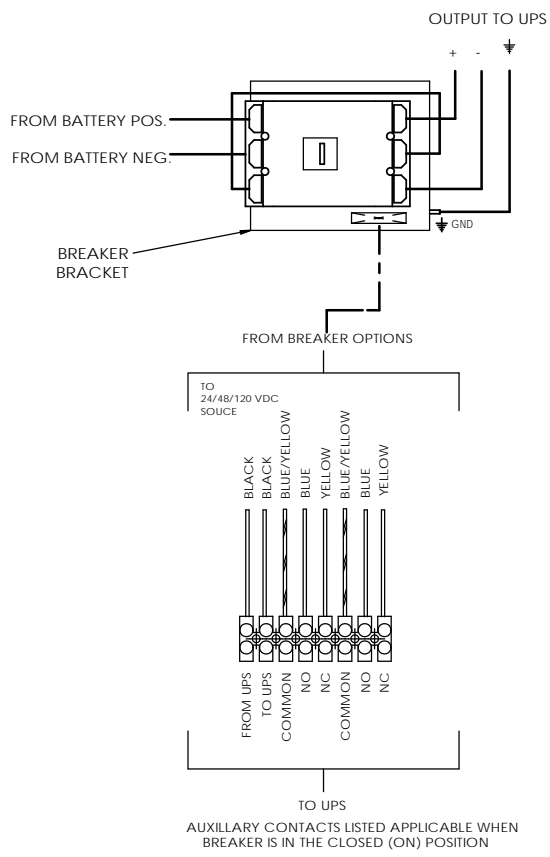
PROPRIETARY AND CONFIDENTIAL  
 SEE INFORMATION CONTAINED IN THIS DRAWING FOR THE DATE REVISIONS OR  
 ELECTRONIC SYSTEMS SUPPORT. ANY  
 REVISIONS TO THIS DRAWING SHALL BE  
 ELECTRONIC SYSTEMS SUPPORT'S  
 PROPERTY.

UNLESS OTHERWISE SPECIFIED		ELECTRONIC SYSTEM SUPPORT		3233 W. Kingsley Rd. Ste. 200 Cedarland, Texas 75041 PH: 972-272-2668 FAX: 972-276-2644	
DESIGNER: [initials]	DATE: 12-13	TITLE: BATTERY RACK, 16V FT. 384V, TOP BREAKER, 4 TIER		SIZE: D	REV: A
PROJECT: [initials]	DATE: 12-13	DRAWN: [initials]		SCALE: 1:16	WEIGHT: [initials]
ISSUED: [initials]	DATE: [initials]	CHECKED: [initials]		SCALE: 1:16	WEIGHT: [initials]
REVISION: [initials]	DATE: [initials]	APPROVED: [initials]		SCALE: 1:16	WEIGHT: [initials]
USED ON: [initials]	DATE: [initials]	DO NOT SCALE DRAWING		SCALE: 1:16	WEIGHT: [initials]

8 7 6 5 4 3 2 1



### BREAKER DETAIL



BATTERY RACK PART NUMBER GUIDE			
RACK PART NUMBER		DESCRIPTION	
EFRAA	P	A	
BASE PART NUMBER			
RACK HEIGHT			
RACK COLOR			

BATTERY CONFIGURATION TABLE		
BATTERY MANUFACTURER	MAXIMUM NUMBER OF BATTERIES PER RACK	
ENERSYS		
BATTERY MODEL NUMBER	16HX800F-FR	24
	16HX925F-FR	

HEIGHT LEGEND	
HEIGHT (INCHES)	AVAILABILITY
A = 84.00	N/A
B = 82.00	N/A
C = 80.00	4-6 WEEKS
D = 79.0	4-6 WEEKS
E = 78.7	4-6 WEEKS
F = 78.4	4-6 WEEKS
G = 78.0	4-6 WEEKS
H = 77.3	4-6 WEEKS
J = 76.8	4-6 WEEKS
K = 75.3	4-6 WEEKS
L = 75.0	4-6 WEEKS
M = 74.8	4-6 WEEKS
N = 73.5	4-6 WEEKS
**P = 72.0	IN STOCK
Q = 71.7	N/A
R = 70.9	N/A
S = TBD	N/A
T = TBD	N/A

\*\* 72.0 IS THE STANDARD HEIGHT FOR THE EFRAA RACKS. SHORTER HEIGHTS ARE NOT AVAILABLE\*\* PLEASE CONSULT WITH SALES STAFF FOR FURTHER INFO.

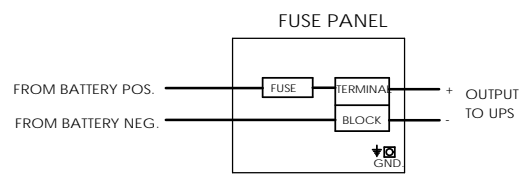
COLOR LEGEND	
**A = BLACK	
B = BEIGE	
C = LIEBERT GRAY	
D = MITSUBISHI BEIGE	
E = MGE WHITE	
F = TOSHIBA BLACK	
G = GE WHITE	
H = LIEBERT BLACK	
J = EATON BLACK	
K = TBD	

\*\*BLACK IS ESS STANDARD COLOR AND WILL BE IN STOCK\*\*  
LETTERS STATING "TBD" ARE OPEN FOR CUSTOM COLORS NOT LISTED, PLEASE CONSULT WITH SALES STAFF FOR FURTHER INFO.

### ELECTRICAL NOTES:

1. ALL CABLES ARE UL LISTED.
2. ALL BREAKERS ARE UL RECOGNIZED.
3. ALL FUSES ARE UL RECOGNIZED, TYPE A50P, A70P OR EQUIVALENT. ALWAYS REPLACE WITH SAME TYPE OR ITS EQUIVALENT.
4. TERMINAL BLOCKS ARE UL RECOGNIZED, 600V RATED.
5. RACKS ARE SHIPPED WITH THE BREAKER IN THE TRIPPED POSITION.
6. RACK GROUND CONNECTION IS A 5/16-18 THREADED STUD.
7. CABLES BETWEEN BATTERY RACK TO UNINTERRUPTIBLE POWER SUPPLY ARE OPTIONAL.

### FUSE OPTION



### PART NUMBER GUIDE:

1. REFERENCE THE BATTERY PART NUMBER GUIDE TABLE WHEN ORDERING A RACK.
2. THE BASE NUMBER WILL ALWAYS BE THE SAME. HOWEVER, 2 ALPHA DIGITS WILL FOLLOW THE BASE NUMBER INDICATING THE HEIGHT AND COLOR OF THE RACK.
3. REFERENCE THE "HEIGHT LEGEND" TABLE AND THE "COLOR LEGEND" TABLE IN ORDER TO DETERMINE THE 2 ALPHA DIGITS NEEDED TO COMPLETE YOUR ORDER.
4. EXAMPLE: EFRAAPA - THIS REPRESENTS A STANDARD EFRAA RACK, 72.0 INCH HEIGHT WITH A POWDER COAT FINISH OF STANDARD BLACK.

UNLESS OTHERWISE SPECIFIED DIMENSIONS ARE IN INCHES DECIMALS		<b>ESS ELECTRONIC SYSTEM SUPPORT</b> 888-475-9292 www.ess.io		2233 W. Kingsley Rd. Ste. 200 Garland, Texas 75041 PH: 972-272-2444 FAX: 972-272-9844
PROPRIETARY AND CONFIDENTIAL SEE INFORMATION CONTAINED IN THIS DRAWING FOR THE DATE SHIPPED. ANY REPRODUCTION OR TRANSMISSION OF THIS DRAWING WITHOUT THE WRITTEN PERMISSION OF ESS ELECTRONIC SYSTEMS SUPPORT IS PROHIBITED.	PROJECT: DRAWING NO: DATE: SCALE: 1:16	REV: DATE: BY: CHECKED: APPROVED:	TITLE: BATTERY RACK, 16V FT., 384V. TOP BREAKER, 4 TIER	SIZE: DWG. NO: EFR4A-SPEC
USED ON	SEE NOTE 1	SEE NOTE 2	SCALE: 1:16	WEIGHT: SHEET 2 OF 2