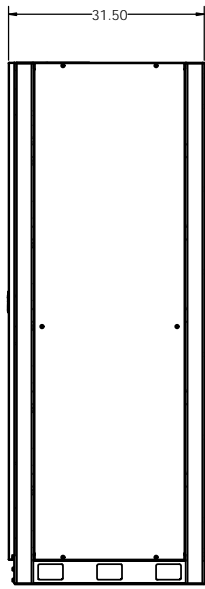
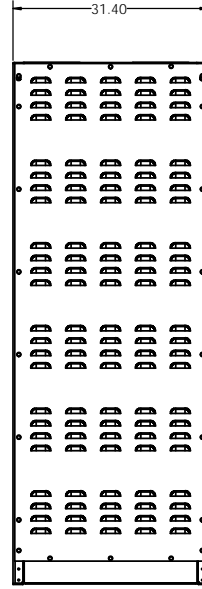


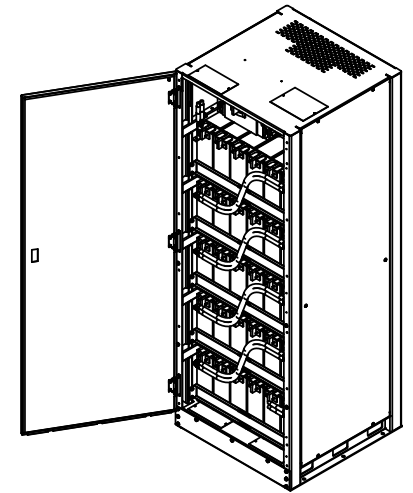
FRONT VIEW



SIDE VIEW



REAR VIEW

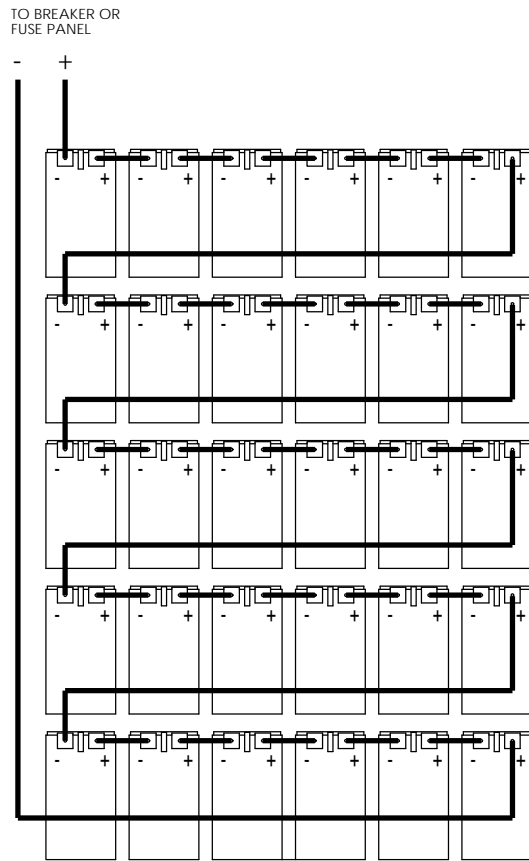


CABINET NOTES:

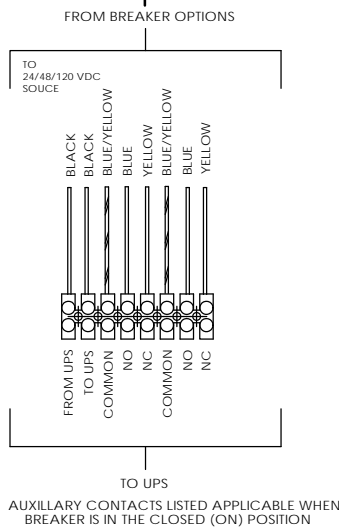
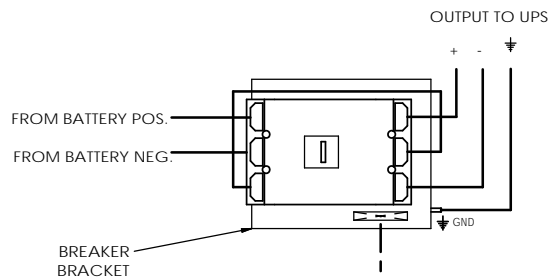
1. NEMA 1 DESIGN.
2. EMPTY CABINET WEIGHT: 550 LBS. (340KG)
3. UL 1778 LISTED AND FULLY TESTED AT THE FACTORY PRIOR TO SHIPPING.
4. FULLY WELDED FRAME. MANUFACTURED FROM HEAVY GAUGE STEEL.
5. POWDER COATED WITH A CORROSION RESISTANT, EPOXY HYBRID POWDER USING A FIVE STAGE EMERSION PRETREATMENT PROCESS.
6. BATTERIES CAN BE ACCESSED FROM FRONT, REAR, AND BOTH SIDES.
7. CUSTOM DESIGNED PALLETS FOR SHIPPING ANYWHERE, LOCALLY AND GLOBALLY.
8. BATTERY CABINET CAN BE MOVED WITH A NORMAL PALLET JACK FROM FRONT AND REAR.
9. STANDARD AND CUSTOM SPILL CONTAINMENT OPTIONS ARE AVAILABLE.

UNLESS OTHERWISE SPECIFIED		ELECTRONIC SYSTEM SUPPORT		3233 W. Kingsley Rd Ste. 200 Capekirk, Texas 75641 PH: 972-272-2668 FAX: 972-276-2664	
DIMENSIONS ARE IN INCHES DECIMALS		ELECTRONIC SYSTEM SUPPORT		888-475-9292 www.ess.io	
ANGLES: MATCH 5. 8. 10	DATE: 2/24/12	TITLE: CABINET, BATTERY, 16V FT, 5 TIER/TOP BRKR, EFC5B			
3/16 PLACE DECIMAL .031	DRN: 224-12	SIZE: D	DWG. NO: EFC5B-SPEC	REV: A	
1/8 PLACE DECIMAL .016	CHECKED:	ISS: SEE NOTE 1	MFG APPR:	SCALE: 1:16	WEIGHT: SHEET 1 OF 2
PROFESSIONAL:	DATE:	ISS: SEE NOTE 2	MFG APPR:		
USED ON:	DATE:	DO NOT SCALE DRAWING	DATE:		

PROPRIETARY AND CONFIDENTIAL
SEE INFORMATION CONTAINED IN THIS DRAWING FOR THE DATE OF THE MOST RECENT EDITION OF THIS DRAWING.
ELECTRONIC SYSTEM SUPPORT AND ELECTRONIC SYSTEM SUPPORT ARE REGISTERED TRADEMARKS OF ELECTRONIC SYSTEM SUPPORT INC.



BREAKER DETAIL



BATTERY CABINET PART NUMBER GUIDE			
CABINET PART NUMBER		DESCRIPTION	
EFC5B	A	A	
			BASE PART NUMBER
			CABINET HEIGHT
			CABINET COLOR

BATTERY CONFIGURATION TABLE		
BATTERY MODEL NUMBER	BATTERY MANUFACTURER	MAXIMUM NUMBER OF BATTERIES PER CABINET
		ENERSYS
	16HX550F-FR	30

HEIGHT LEGEND	
HEIGHT (INCHES)	AVAILABILITY
**A = 84.00	IN STOCK
B = 82.00	N/A
C = 80.00	N/A
D = 79.00	N/A
E = 78.7	N/A
F = 78.4	N/A
G = 78.0	N/A
H = 77.3	N/A
J = 76.8	N/A
K = 75.3	N/A
L = 75.0	N/A
M = 74.8	N/A
N = 73.5	N/A
P = 72.0	N/A
Q = 71.7	N/A
R = 70.9	N/A
S = TBD	N/A
T = TBD	N/A

** 84.0 IS THE STANDARD HEIGHT FOR THE EFC5B CABINETS. SHORTER HEIGHTS ARE NOT AVAILABLE** PLEASE CONSULT WITH SALES STAFF FOR FURTHER INFO.

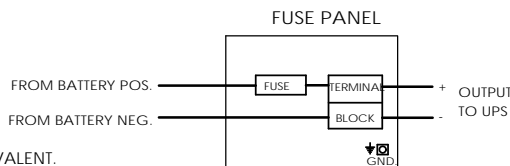
COLOR LEGEND	
**A = BLACK	
B = BEIGE	
C = LIEBERT GRAY	
D = MITSUBISHI BEIGE	
E = MGE WHITE	
F = TOSHIBA BLACK	
G = GE WHITE	
H = LIEBERT BLACK	
J = EATON BLACK	
K = TBD	

**BLACK IS ESS STANDARD COLOR AND WILL BE IN STOCK ** LETTERS STATING "TBD" ARE OPEN FOR CUSTOM COLORS NOT LISTED. PLEASE CONSULT WITH SALES STAFF FOR FURTHER INFO.

ELECTRICAL NOTES:

1. ALL CABLES ARE UL LISTED.
2. ALL BREAKERS ARE UL RECOGNIZED.
3. ALL FUSES ARE UL RECOGNIZED, TYPE A50P, A70P OR EQUIVALENT. (FUSED CABINETS ARE NOT LISTED IN UL FILE). ALWAYS REPLACE WITH SAME TYPE OR ITS EQUIVALENT.
4. TERMINAL BLOCKS ARE UL RECOGNIZED, 600V RATED.
5. CABINETS ARE SHIPPED WITH THE BREAKER IN THE TRIPPED POSITION.
6. CABINET GROUND CONNECTION IS A 5/16-18 THREADED STUD.
7. CABLES BETWEEN BATTERY CABINET TO UNINTERRUPTIBLE POWER SUPPLY ARE OPTIONAL.

FUSE OPTION



PART NUMBER GUIDE:

1. REFERENCE THE BATTERY PART NUMBER GUIDE TABLE WHEN ORDERING A CABINET.
2. THE BASE NUMBER WILL ALWAYS BE THE SAME. HOWEVER, 2 ALPHA DIGITS WILL FOLLOW THE BASE NUMBER INDICATING THE HEIGHT AND COLOR OF THE CABINET.
3. REFERENCE THE "HEIGHT LEGEND" TABLE AND THE "COLOR LEGEND" TABLE IN ORDER TO DETERMINE THE 2 ALPHA DIGITS NEEDED TO COMPLETE YOUR ORDER.
4. EXAMPLE: EFC5BAA - THIS REPRESENTS A STANDARD EFC5B CABINET, 84.0 INCH HEIGHT WITH A POWDER COAT FINISH OF STANDARD BLACK.
5. THE EFC5B CABINET IS NOT AVAILABLE IN OTHER HEIGHTS OTHER THAN 84.0 INCHES.

UNLESS OTHERWISE SPECIFIED:		3233 W. Kingsley Rd. Ste. 200 Gardland, Texas 75041 888-475-9292 www.ess.io	
DESIGNS ARE FINISHED	DATE	ISSUED	DATE
2/24/12	2/24/12		
PROJECT: SEE NOTE 1		TITLE: CABINET, BATTERY, 16V FT, 5 TIER/TOP BRKR, EFC5B	
DESIGN: SEE NOTE 2		SCALE: 1:10	
DRAWN: SEE NOTE 2		SHEET 2 OF 2	