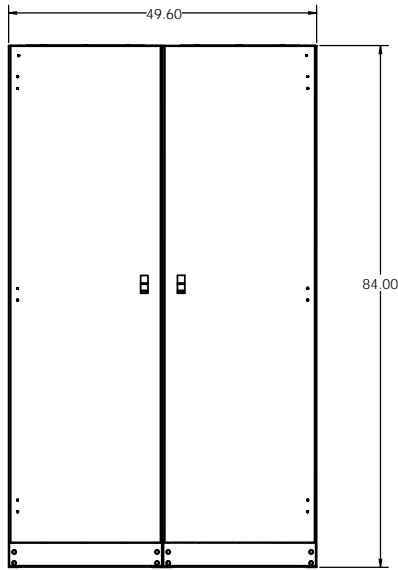
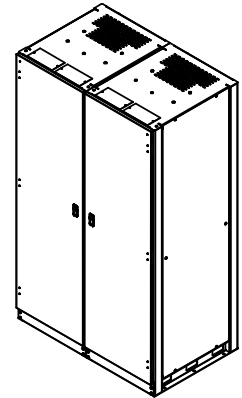
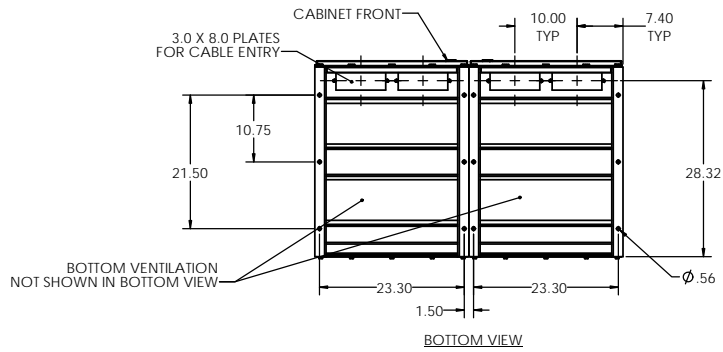
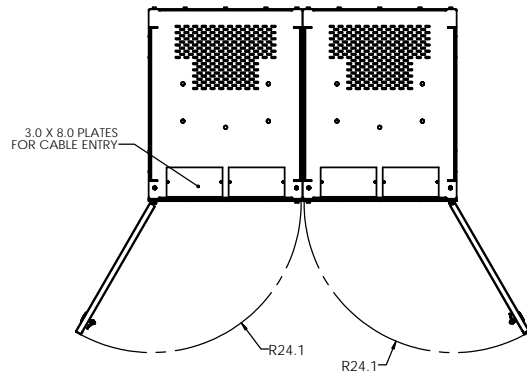
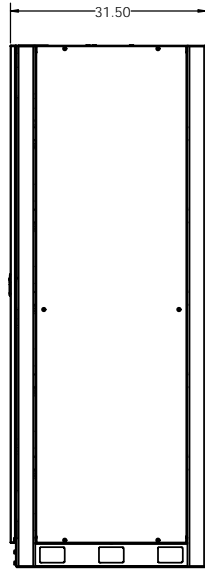


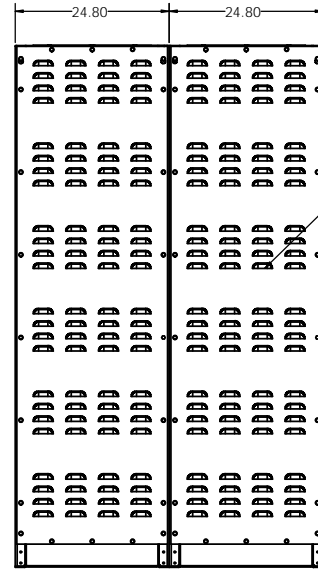
8 7 6 5 4 3 2 1



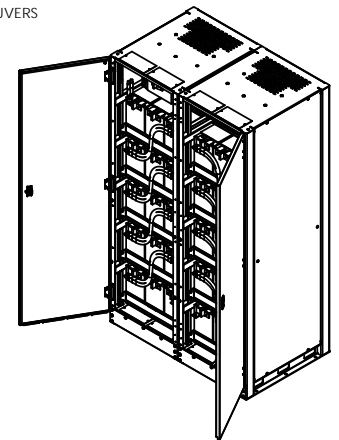
FRONT VIEW



SIDE VIEW



REAR VIEW



CABINET NOTES:

1. NEMA 1 DESIGN.
2. EMPTY CABINET WEIGHT: 750 LBS. (340KG) TOTAL WEIGHT (2 CABINETS) ONE 480V STRING.
3. UL 1778 LISTED AND FULLY TESTED AT THE FACTORY PRIOR TO SHIPPING.
4. FULLY WELDED FRAME. MANUFACTURED FROM HEAVY GAUGE STEEL.
5. POWDER COATED WITH A CORROSION RESISTANT, EPOXY HYBRID POWDER USING A FIVE STAGE EMERSION PRETREATMENT PROCESS.
6. BATTERIES CAN BE ACCESSED FROM FRONT, REAR, AND BOTH SIDES.
7. CUSTOM DESIGNED PALLETS FOR SHIPPING ANYWHERE, LOCALLY AND GLOBALLY (UPON REQUEST).
8. BATTERY CABINET CAN BE MOVED WITH A NORMAL PALLET JACK FROM FRONT AND REAR.
9. STANDARD AND CUSTOM SPILL CONTAINMENT OPTIONS ARE AVAILABLE.

PROPRIETARY AND CONFIDENTIAL
 SEE INFORMATION CONTAINED IN THIS DRAWING FOR THE DATE REVISIONS OR FOR ELECTRONIC SYSTEMS SUPPORT. ANY REVISIONS TO THIS DRAWING SHALL BE MADE TO THE ELECTRONIC SYSTEMS SUPPORT'S WEBSITE.

UNLESS OTHERWISE SPECIFIED: DIMENSIONS ARE IN INCHES FRACTIONS DECIMALS TWO PLACE DECIMALS THREE PLACE DECIMALS	ESSE ELECTRONIC SYSTEMS SUPPORT 3233 W. Kingsley Rd. Ste. 200 Cedarland, Texas 75041 888-475-9292 www.ess.io PH: 972-279-2444 FAX: 972-279-2444	DATE: 12-8-11	TITLE: BATTERY CABINET, 16V FT., 480V 5 TIER, TOP BRKR.
PROJECT: SEE NOTE 1	DESIGNED BY: []	DATE: 12-8-11	SIZE: DWG. NO.
ISSUED BY: SEE NOTE 2	CHECKED BY: []	DATE: []	SCALE: 1:16
DO NOT SCALE DRAWING	SCALE: 1:16	SCALE: 1:16	WEIGHT: []
USED ON: []	SCALE: 1:16	SCALE: 1:16	SHEET 1 OF 2

8 7 6 5 4 3 2 1

