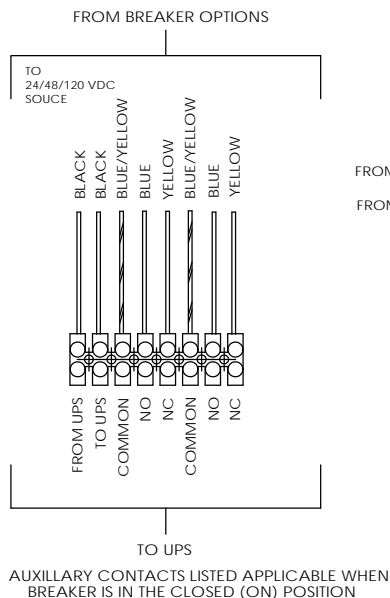
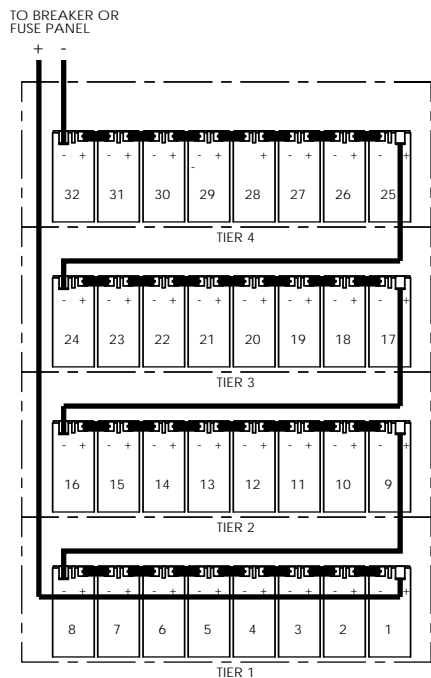
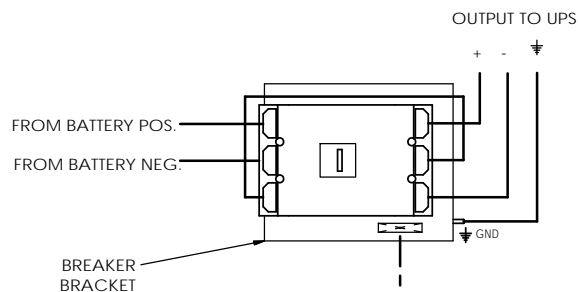


CABINET NOTES:

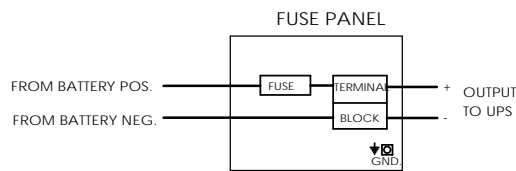
1. NEMA 1 DESIGN.
2. EMPTY CABINET WEIGHT: 730 LBS (332 KG)
3. UL 1778 LISTED AND FULLY TESTED AT THE FACTORY PRIOR TO SHIPPING.
4. FULLY WELDED FRAME. MANUFACTURED FROM HEAVY GAUGE STEEL.
5. POWDER COATED WITH A CORROSION RESISTANT, EPOXY HYBRID POWDER USING A FIVE STAGE EMERSON PRETREATMENT PROCESS.
6. BATTERIES CAN BE ACCESSED FROM FRONT, REAR, AND BOTH SIDES.
7. CUSTOM DESIGNED PALLETS FOR SHIPPING ANYWHERE LOCALLY AND GLOBALLY (UPON REQUEST).
8. BATTERY CABINET CAN BE MOVED WITH A NORMAL PALLET JACK FROM FRONT AND REAR.
9. STANDARD AND CUSTOM SPILL CONTAINMENT OPTIONS ARE AVAILABLE.

UNLESS OTHERWISE SPECIFIED		ELECTRONIC SYSTEM SUPPORT		3231 W. Kingsley Rd. Ste. 200 Cedarland, Texas 75041 PH: 972-272-2448 FAX: 972-276-2644	
DIMENSIONS ARE FINISHED UNLESS NOTED OTHERWISE		888-475-9292 www.ess.io		TITLE: BATTERY CABINET, 12V. FT., 384V, 4 TIER, TOP BRKR	
PROJ: 10000000000000000000	DATE: 03-12	DESIGNER: [Signature]	DATE: 03-12	SIZE: DWG. NO. D	REV: EFC44-SPEC B
ISSUED: SEE NOTE 1	DATE: 03-12	DESIGNER: [Signature]	DATE: 03-12	SCALE: 1:12	WEIGHT: SHEET 1 OF 2
USED ON: [Blank]	DATE: 03-12	DESIGNER: [Signature]	DATE: 03-12		

BREAKER DETAIL



FUSE OPTION



BATTERY CABINET PART NUMBER GUIDE			
CABINET PART NUMBER			DESCRIPTION
EFC44	P	A	
			BASE PART NUMBER
			CABINET HEIGHT
			CABINET COLOR

BATTERY CONFIGURATION TABLE		
BATTERY MANUFACTURER	MAXIMUM NUMBER OF BATTERIES PER CABINET	
EAST PENN		
BATTERY MODEL NUMBER		
HR5500ET	32	
HR7500ET		

HEIGHT LEGEND	
HEIGHT (INCHES)	AVAILABILITY
A = 84.00	N/A
B = 82.00	N/A
C = 80.00	4-6 WEEKS
D = 79.00	4-6 WEEKS
E = 78.7	4-6 WEEKS
F = 78.4	4-6 WEEKS
G = 78.0	4-6 WEEKS
H = 77.3	4-6 WEEKS
J = 76.8	4-6 WEEKS
K = 75.3	4-6 WEEKS
L = 75.0	4-6 WEEKS
M = 74.8	4-6 WEEKS
N = 73.5	4-6 WEEKS
**P = 72.0	IN STOCK
Q = 71.7	4-6 WEEKS
R = 70.9	4-6 WEEKS
S = TBD	N/A
T = TBD	N/A

** 72.0 IS THE STANDARD HEIGHT FOR THE EFC44 CABINETS. SHORTER HEIGHTS ARE NOT AVAILABLE** PLEASE CONSULT WITH SALES STAFF FOR FURTHER INFO.

COLOR LEGEND
**A = BLACK
B = BEIGE
C = LIEBERT GRAY
D = MITSUBISHI BEIGE
E = MGE WHITE
F = TOSHIBA BLACK
G = GE WHITE
H = LIEBERT BLACK
J = EATON BLACK
K = TBD

**BLACK IS ESS STANDARD COLOR AND WILL BE IN STOCK **
LETTERS STATING "TBD" ARE OPEN FOR CUSTOM COLORS NOT LISTED. PLEASE CONSULT WITH SALES STAFF FOR FURTHER INFO.

PART NUMBER GUIDE:

1. REFERENCE THE BATTERY PART NUMBER GUIDE TABLE WHEN ORDERING A CABINET.
2. THE BASE NUMBER WILL ALWAYS BE THE SAME. HOWEVER, 2 ALPHA DIGITS WILL FOLLOW THE BASE NUMBER INDICATING THE HEIGHT AND COLOR OF THE CABINET.
3. REFERENCE THE "HEIGHT LEGEND" TABLE AND THE "COLOR LEGEND" TABLE IN ORDER TO DETERMINE THE 2 ALPHA DIGITS NEEDED TO COMPLETE YOUR ORDER.
4. EXAMPLE: EFC44PA - THIS REPRESENTS A STANDARD EFC44 CABINET, 72.0 INCH HEIGHT WITH A POWDER COAT FINISH OF STANDARD BLACK.

ELECTRICAL NOTES:

1. ALL CABLES ARE UL LISTED.
2. ALL BREAKERS ARE UL RECOGNIZED.
3. ALL FUSES ARE UL RECOGNIZED, TYPE A50P, A70P OR EQUIVALENT. (FUSED CABINETS ARE NOT LISTED IN UL FILE). ALWAYS REPLACE WITH SAME TYPE OR ITS EQUIVALENT.
4. TERMINAL BLOCKS ARE UL RECOGNIZED, 600V RATED.
5. CABINETS ARE SHIPPED WITH THE BREAKER IN THE TRIPPED POSITION.
6. CABINET GROUND CONNECTION IS A 5/16-18 THREADED STUD.
7. CABLES BETWEEN BATTERY CABINET TO UNINTERRUPTIBLE POWER SUPPLY ARE OPTIONAL.

PROPRIETARY AND CONFIDENTIAL
SEE INFORMATION CONTAINED IN THIS DRAWING FOR THE DATE REVISION OR FOR ELECTRICAL SYSTEMS SUPPORT. ANY USE OF THIS DRAWING WITHOUT THE WRITTEN PERMISSION OF ELECTRONIC SYSTEMS SUPPORT IS PROHIBITED.

UNLESS OTHERWISE SPECIFIED: DIMENSIONS ARE IN INCHES FRACTIONS	DATE: 09-12-12	ISSUED BY: [Signature]	DATE: 09-12-12	ISSUED BY: [Signature]
PROJECT: [Signature]	DATE: 09-12-12	ISSUED BY: [Signature]	DATE: 09-12-12	ISSUED BY: [Signature]
REVISION: [Signature]	DATE: 09-12-12	ISSUED BY: [Signature]	DATE: 09-12-12	ISSUED BY: [Signature]
USED ON:	SCALE: 1/2" = 1'-0"	TITLE: BATTERY CABINET, 12V, FT, 384V, 4 TIER, TOP BRKR.	SIZE: DWG. NO. EFC44-SPEC	REV: B
SCALE: 1/2" = 1'-0"	SCALE: 1/2" = 1'-0"	SCALE: 1/2" = 1'-0"	SCALE: 1/2" = 1'-0"	SCALE: 1/2" = 1'-0"

3233 W. Kingsley Rd.
Ste. 200
Cedarburg, Wis. 53004
PH: 912-372-3444
FAX: 912-275-9844

ESS ELECTRONIC SYSTEMS SUPPORT
888-475-9292 www.ess.io

SCALE: 1/2" = 1'-0"

SCALE: 1/2" = 1'-0"

SCALE: 1/2" = 1'-0"

SCALE: 1/2" = 1'-0"